



Line Items

The Official
Newsletter
Of Excelsior EMC

November 2022 • Vol. 43, No. 9

COOPERATIVE Q & A

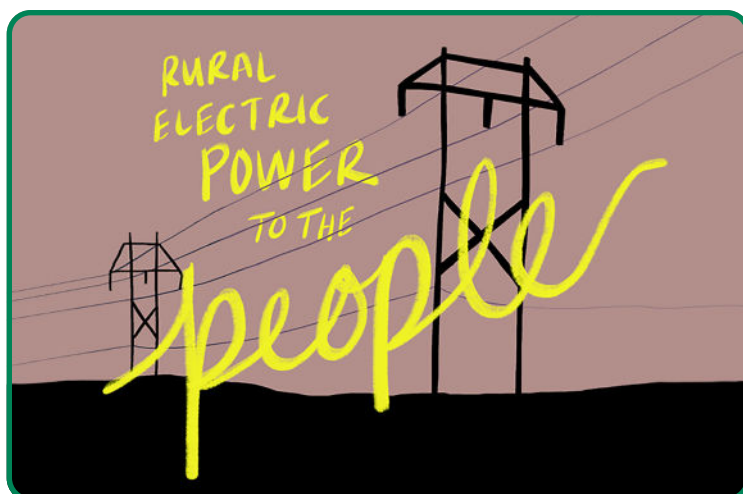
As you know, Excelsior EMC is an electric cooperative. However, we are frequently asked questions such as “What is a cooperative?” and “What are some of the advantages of being a cooperative?”. We would like to use this article to answer some of these questions for our members.

What is an electric cooperative?

An electric cooperative is a private, non-profit company which is owned and run by its members for the purpose of supplying all members with electricity. Electric cooperatives were initially created to supply electricity to residents of rural areas miles outside of cities or towns that were deemed too costly to serve by investor-owned companies. Today, ownership of Excelsior EMC is spread between over 17,100 members across eight different counties.

How does an electric cooperative operate?

Because electric cooperatives are member-owned and operated, democratic processes allow each member a vote in cooperative business sessions and annual cooperative board elections of which elected directors are nominated from among the members. Excelsior EMC’s Board of Directors, consisting of nine of your peers, guide the business practices of the Cooperative with the best interests of the members in mind.



What are the advantages of being a cooperative?

- Electric cooperatives are service focused. As you have heard us say many times in the past, we work tirelessly to provide every member with safe, reliable, and affordable electricity. While investor-owned companies are hesitant to serve rural areas because they can make more profit on in-town homes and businesses, cooperatives are dedicated to supplying all members with electricity no matter how rural of an area. With top-notch service as our priority, we have trouble shooters and dispatchers on-call 24/7/365 who are dedicated to getting your lights back on as soon as possible, no matter the time of day or weather conditions.
- Cooperatives follow democratic processes and allow each member to vote in board member elections, participate in policy making, and influence the company in sharing their ideas and concerns. This is typically done every May at our Annual Meeting, so please be sure to attend and exercise your right to vote on the matters of your Cooperative!
- Because we are not driven by making a profit, our members benefit from receiving cheaper electricity. Our CEO, Greg Proctor, said it best in May’s edition of *Line Items* when he stated, “We don’t try to get the highest price from our members, but the lowest price for our members.”
- Cooperatives are community focused and work to improve the sustainability and well-being of their local and surrounding communities. Unlike larger investor-owned companies, 100% of Excelsior EMC employees and directors live right here in the communities we serve. You can rest assured that we, as your neighbors, take pride in our community and will do our best to improve it where we can.

Line Items

BRONSON BRAGDON
Editor

BOARD OF DIRECTORS

Mike Anderson, Chairman	Statesboro, Georgia
Wade Hodges, Vice Chairman	Statesboro, Georgia
G.W. Johnson, Jr., Sec.-Treas.	Twin City, Georgia
Jordy Carter	Metter, Georgia
David Cromley	Brooklet, Georgia
Amy Hendrix	Metter, Georgia
Russell Mathis	Statesboro, Georgia
Grady McCray	Metter, Georgia
Solly Trapnell	Statesboro, Georgia

Greg Proctor, President/CEO

*Jessie Goodman, Manager
Construction and Maintenance*

*Bill Walden, Manager
Data and Technical Services*

*Lindy Chester, Manager
Financial & Accounting Services*

*Howard Porter, Manager
Member Services*

When Your Power is Off – Call (912) 685-2115 or (912) 764-2123

When your power goes off, don't stay in the dark longer than you have to. To restore your power as quickly as possible, we need your correct phone number. Your phone number is the quickest way for us to locate your home or business when you call to report an outage.

The LINE ITEMS (ISSN 1089-9987) is published monthly for \$1.00 per year by Excelsior EMC, 2574 Northside Drive West, Statesboro, Georgia 30458. Periodicals postage paid at Statesboro, Georgia. POSTMASTER: Send address changes to LINE ITEMS, P.O. Box 297, Metter, Georgia 30439

Between the Lines

by
Greg Proctor
President/CEO

Thankfulness

Thanksgiving comes along once a year, offering a chance for us to pause and consider those things we are thankful for. While many of us take note of the blessings that enrich our lives on a daily basis, Thanksgiving gives me, at least, a reason to write it down.

First and foremost, "Give thanks to the LORD for He is good; for His steadfast love endures forever!" I am thankful for good health, a loving family and friends, a meaningful job with great coworkers at a fantastic cooperative.

We are a blessed nation. We live with freedoms and opportunities others long to have. I am thankful for the men and women who have served our great nation defending its freedoms.

I'm also thankful I get to work with a great team at Excelsior EMC. Over the last several months we've been looking at our organizational structure, evaluating how we do things and preparing for upcoming retirements. This exercise has reminded me of a very important point. Your employees at Excelsior EMC are dedicated and hardworking. They enjoy what they do and care deeply about the Cooperative's mission and the communities they serve.

Every job interview we conduct includes a reminder of why Excelsior EMC was formed – to serve our members. It's why we have a job and it's what we do. Plain and simple. The Cooperative exists to serve you, its members, and constantly improving how we do that is what drives us each and every day.

I'm thankful for the members who reach out to me. I appreciate your letters, emails and phone calls that let me know when we are doing a good job, and when we aren't.

I'm thankful for those members who support our employees. The kindness shown through a warm cup of coffee after a long night working on a power line, a holiday cookie delivered to our office, or a smile shared when you visit our office mean more than you know.

When my family sits down to give thanks before dinner on Thanksgiving Day, I'll be hoping you are with your family and friends as well.

Thank you for your support. Happy Thanksgiving from all of us here at your electric cooperative.



Every Member Counts

LINEMEN: *Dressed for Success*

Excelsior EMC Lineman Jessie Harshner knows the importance of dressing correctly for the job.

It takes a lot of equipment to work on power lines while they're still energized with electricity. Gone are the days when Excelsior EMC disrupts power supply to make repairs or improvements. Now, most work is done so that our members never notice the slightest blink.

Besides the personal protection equipment you see on Jessie below, crews also rely on insulated bucket trucks and other devices to help them safely accomplish their daily tasks. It takes years of specialized training to do the job of a lineman competently and safely.

Excelsior EMC
Lineman
Jessie Harshner



HARD HAT

Protects head from bumps and drops and serves as insulator from electrical contact.



EYE PROTECTION

Shields eyes from objects and debris.



FLAME RESISTANT (FR) CLOTHING

Protects the lineman who is exposed to the risk of fire and electrical arcs.



RUBBER SLEEVES

Insulates the lineman from electrical contact on shoulders and arms.



RUBBER GLOVES

Insulates the lineman from electrical contact on hands.



LEATHER GLOVE PROTECTOR

Protects rubber gloves from punctures as well as the lineman's hands from injuries.



CLIMBING BELT

Supports the lineman's weight while on pole and provides an attachment point for climbing lanyard.



FALL ARREST DEVICE

Protects the lineman from falls on the pole by automatically tightening in case of a slip.



STEEL CLIMBERS

Sharp spikes allow the lineman to climb wooden poles.



LINEMAN BOOTS

Protects feet, ankles and lower legs and provides support for climbing.



SHOTGUN STICK

Insulated stick with maneuverable hook that allows the lineman to manipulate line hardware.



With cooler temperatures right around the corner, keep in mind that the most energy efficient thermostat setting for winter heating is 68 degrees.

From our table to yours,

*Happy
Thanksgiving*

We're thankful for your membership!
Wishing everyone a wonderful Thanksgiving
filled with good food and fellowship
with loved ones.

In observance of Thanksgiving, Excelsior EMC offices will be closed:
Thursday, November 24, 2022 and Friday, November 25, 2022.
Emergency personnel will be available by calling
our 24-hour dispatch center at (912) 685-2115 or (912) 764-2123.

PERIODICALS POSTAGE
PAID AT
STATESBORO, GA 30458