



Line Items

The Official
Newsletter
Of Excelsior EMC

March 2023 • Vol. 44, No. 1

KNOW BEFORE YOU BUY: EXCELSIOR EMC'S NEW SOLAR ASSESSMENT TOOL

Rooftop Solar Assessment

Complete this brief questionnaire to generate an estimate of your solar generation potential, ongoing utility costs and estimated payback period for a rooftop solar system. Before making a decision, contact your local EMC. As your trusted energy advisor, we can help you make smart energy investments.

Does your roof face south?

A south-facing roof is the most ideal orientation for rooftop solar. Homes that face other directions will produce electricity, just not as much.

South Facing (No Loss) East or West Facing (15% Loss) SE or SW Facing (5% Loss) Don't know (Assumed 5% Loss)

Pictured above: Excelsior EMC's new solar assessment tool will prompt users to input information about the location, age and amount of available direct sunlight on their home.

Estimated annual electric bill without solar:	\$3,000	Estimated payback time:	Cash	15.8 years
Estimated new annual electric bill with solar:	\$2,048		Loan	16.7 years
Estimated annual electric bill savings	\$952			

Electricity Production and Usage Overview

- Sold to Electric Cooperative (0 kWh) \$0
- Day Use Purchased (8290 kWh) \$1,118
- Night Use Purchased (5115 kWh) \$690
- Solar Generated (7055 kWh) \$952
- Est. Electric Cooperative Service Fees \$240

A kilowatt-hour (kWh) is a measurement of your electricity usage. Note: While the electricity you purchase may decrease, you will still be provided with electricity at night and on cloudy days.

Pictured above: Excelsior EMC's solar assessment tool provides detailed information regarding annual savings one can expect and the estimated payback period for an investment in solar power.

Over the past few years, Excelsior EMC has seen significant increases in the number of our members interested in solar power for their homes. With the rise in popularity and the rapid growth of new startup companies competing in this market, one may wonder, "How can I be sure if solar is right for me?" Excelsior EMC is committed to providing resources that allow our members to make informed, data-driven decisions. For this reason, we have partnered with Green Power EMC to provide you with a solar assessment tool.

Due to the significant increase in popularity of residential solar, there has unfortunately been a huge increase in the number of solar companies looking to take advantage of our members. These companies promise huge returns with little to no upfront costs. Additionally, many companies employ aggressive sales tactics to quickly enroll new customers into a long-term contract. What these companies do not share is that solar may not be a feasible solution for your home.

With the implementation of our new solar assessment tool, our members now have the ability to determine whether or not solar may be a good fit for their home without consulting a solar company. To use the tool, go to our website at www.excelsioremc.com and find the Solar Assessment Tool under the Quick Links tab. After clicking on the link, you will be directed to an online application that takes into consideration your home's unique characteristics such as the orientation of the home, shade cover from your yard, average electric bill amounts, and age of your roof. This tool will then project your monthly savings on your electric bill and calculate the estimated payback period of an investment in a residential solar system. This data will allow you to determine if solar is a viable option for you and your home.

**Check out our website for more information at:
[excelsioremc.com!](http://excelsioremc.com)**

Line Items

Bronson Bragdon
Editor

BOARD OF DIRECTORS

Mike Anderson <i>Chairman</i>	Statesboro, Georgia
Wade Hodges <i>Vice Chairman</i>	Statesboro, Georgia
G.W. Johnson <i>Secretary-Treasurer</i>	Twin City, Georgia
Jordy Carter	Metter, Georgia
David Cromley	Brooklet, Georgia
Amy Hendrix	Metter, Georgia
Russell Mathis	Statesboro, Georgia
Grady McCray	Metter, Georgia
Solly Trapnell	Statesboro, Georgia

Greg Proctor
President/CEO

Bill Walden
Executive Vice President

Howard Porter
Vice President, Engineering Services

Lindy Chester
Vice President, Finance and Member Services

Bronson Bragdon
Director of Marketing and Communications

Josh Holland
Director of Operations

When Your Power is Off - Call (912) 685-2115 or (912) 764-2123

When your power goes off, don't stay in the dark longer than you have to. To restore your power as quickly as possible, we need your correct phone number. Your phone number is the quickest way for us to locate your home or business when you call to report an outage.

LINE ITEMS (ISSN 1089-9987) is published monthly for \$1.00 per year by Excelsior EMC, 2574 Northside Dr West, Statesboro, GA 30458. Periodicals postage paid at Statesboro, Georgia. POSTMASTER: Send address changes to LINE ITEMS, P.O. Box 297, Metter, Georgia 30439

Between the Lines

by
Greg Proctor
President/CEO

Right of Way Update

When it comes to providing the reliable electric service you depend on, trimming trees and vegetation around power lines can make a significant difference.

The number one cause of power outages is tree limbs coming in contact with power lines. Properly maintaining the area around power lines reduces the likelihood of a prolonged outage caused by trees. It's also important to keep trees around power lines trimmed for safety. Trees are excellent conductors of electricity. If a tree has grown into a power line, electricity can travel to the ground and create an electrocution hazard.

In an effort to provide safe and reliable electric service to members, Excelsior EMC strives to keep electric lines clear of trees, brush and foliage through its vegetation maintenance program.

Side-trimming crews use mechanical trimmers and bucket trucks to keep trees and limbs 15 feet away from single phase power lines and 20 feet away from multi-phase power lines. Spray crews manage the vegetation underneath power lines by selectively spraying woody trees and shrubs that could grow into the power lines or hinder the work of crews as they perform routine maintenance and restore power during outages.

Our contractors are currently side-trimming on the Metter Substation in the Evergreen area. Once this circuit is completed, they will move to the Excelsior, Lake Church, and areas north of town. The crew should complete the Metter substation in July and move to the Northeast Emanuel Substation located between Summertown and Midville. This substation serves the Cross and Green Community as well as the Old Savannah Road, Hereford Farm Road, and Herndon Road areas. They should finish this substation in September and begin work on the ECI Substation located east of Twin City. This substation serves the Canoochee and Garfield communities and along Highway 80 between Twin City and Portal. We estimate they will finish this substation in February 2024 and begin work on the Banks Creek Substation on the east side of Portal.

Our contract spraying crews will begin their work in early May and should finish in July. They will be treating rights of way on the I-16/Hwy 301 Substation in the Nevils, Denmark, Claxton, Excelsior, and Register communities. They will also treat the Clito Substation in the Middleground, Clito, Leefield, and Hwy 24 areas. The Southeast Bulloch Substation will be treated from the Highway 67 exit on I-16 to Denmark to Brooklet and in the Arcola, Lane's Church, and Leefield areas. The Country Club, Turkey Trail, Southern Comfort and Smith Creek areas will also be treated on the Jimps Substation.

We need your cooperation. We have over 2,800 miles of primary power lines throughout our eight-county service area. It takes four years to complete a side-trimming cycle and three years to complete a spraying cycle. You can help us by working with our contractors when they are trimming or spraying in your area. Your cooperation is greatly appreciated.



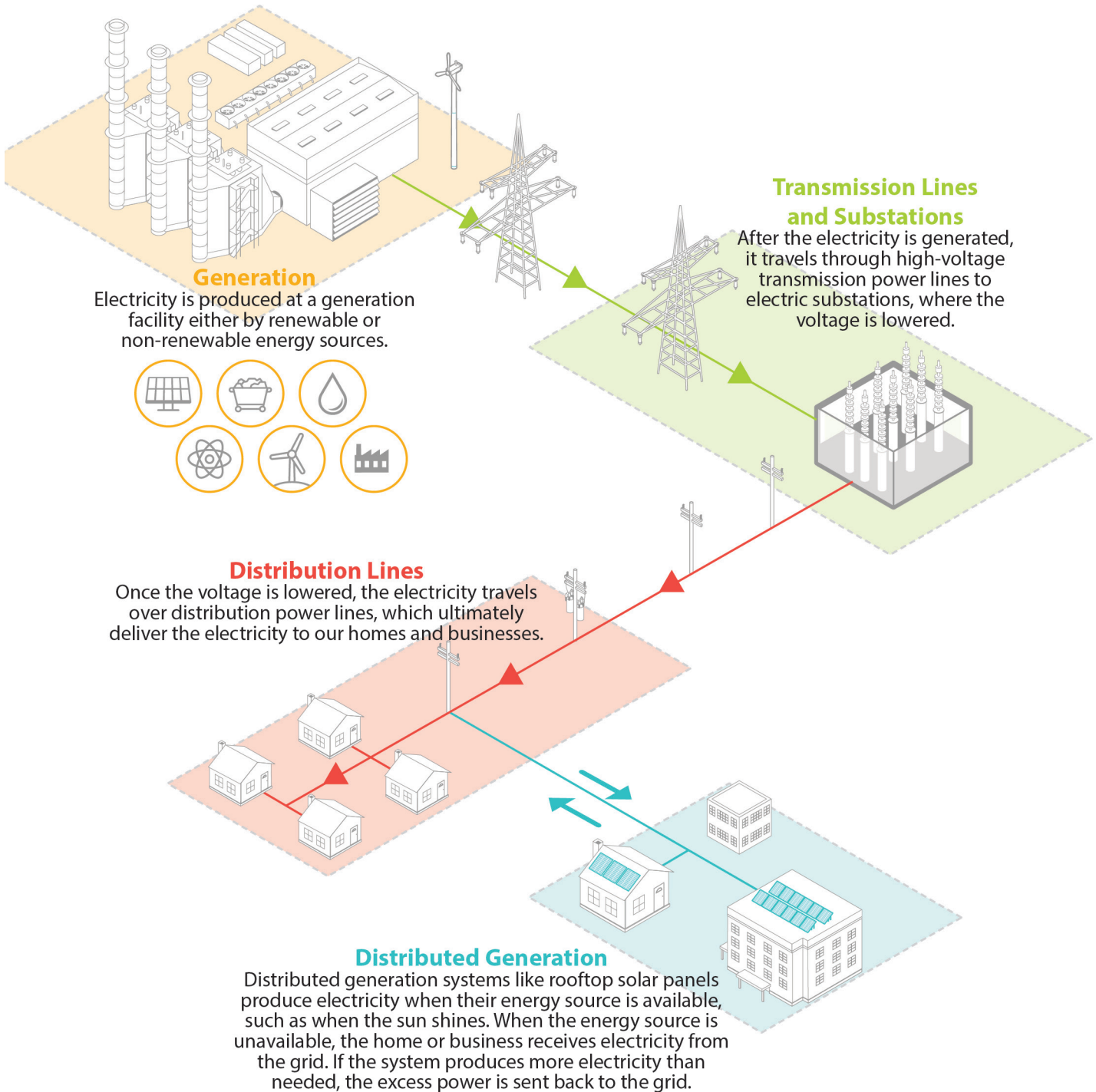
NOTICE: NEW HOURS FOR STATESBORO OFFICE

Beginning April 3rd, the Statesboro office will be closing for lunch between 1:00pm and 2:15pm in order for us to staff our Statesboro office more efficiently.



Every Member Counts

HOW ELECTRICITY REACHES YOU



Notice of Capital Credit Assignments for the Year 2022

Because of the cooperative structure of Excelsior EMC and the bylaws under which it operates, assignment of capital supplied by each member each year must be made and recorded on the Cooperative's books.

This assignment is made by applying the percentage of the Cooperative's margins (revenues in excess of expenses) to the member's total billing for the year. In addition to this, margins are assigned to Excelsior EMC by other organizations with which it is associated such as Oglethorpe Power Corporation (our wholesale power supplier). The percentage assigned from these associated organizations is assigned to each member each year in the same manner as explained above.

General retirement of capital credits has previously been made for the years 1938 through 1950. Currently, capital credits are used by your Cooperative for the expansion of general plant and facilities. It is in effect, invested in poles, wire,

transformers, substations and other property owned by the Cooperative. This use of capital credits helps lower the Cooperative's needs for borrowed funds and reduces overall indebtedness.

The assignment factor resulting from Excelsior EMC's margins for the year 2022 for all rates is 0.000000. The assignment factor resulting from associated organizations for the year 2022 for all rates is 0.02512741.

Shown in the table below are examples of the manner in which your capital credit assignment has been determined. To compute your individual assignment, you need only to apply the assignment factor to the total of your power bill (before taxes) for the appropriate year. If you have any questions about your capital credit assignments, or if you would like our team to compute your assignments, please call Excelsior EMC's office in Metter.

YOUR CAPITAL CREDITS MAY NOT BE CREDITED AGAINST YOUR BILLING FOR ELECTRIC SERVICE CAPITAL CREDIT ILLUSTRATION TABLE

YEAR	ASSIGNMENT FACTOR	IF YOUR TOTAL BILLS WERE:	\$300.00	\$600.00	\$1,000.00
2022	0.000000	Patronage Capital Assigned From Excelsior EMC	\$0.00	\$0.00	\$0.00
2022	0.02512741	Patronage Capital Assigned From Associated Organizations	\$ 7.54	\$15.08	\$25.13

EDITOR'S NOTE - ASSIGNMENTS OF CAPITAL CREDITS IN THIS MANNER MEETS NOTIFICATION REQUIREMENTS AND SAVES YOUR COOPERATIVE MANY DOLLARS IN PRINTING AND MAILING COSTS.

PERIODICALS POSTAGE
PAID AT
STATESBORO, GA 30458